

# December 2008 Sales Tax Collections

---

Aspen -19%

Winter Park -14%

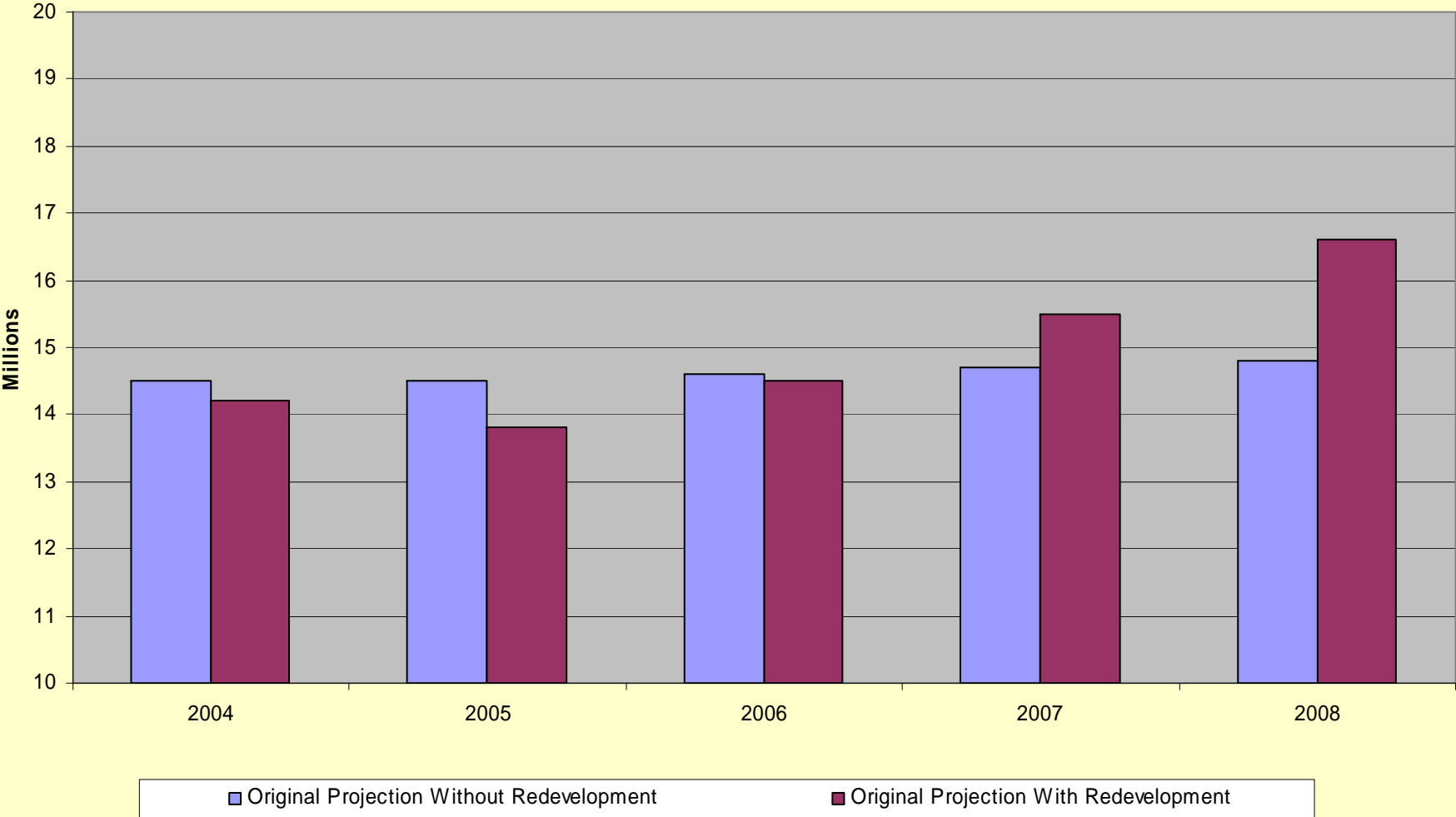
Breckenridge -10%

Snowmass -10%

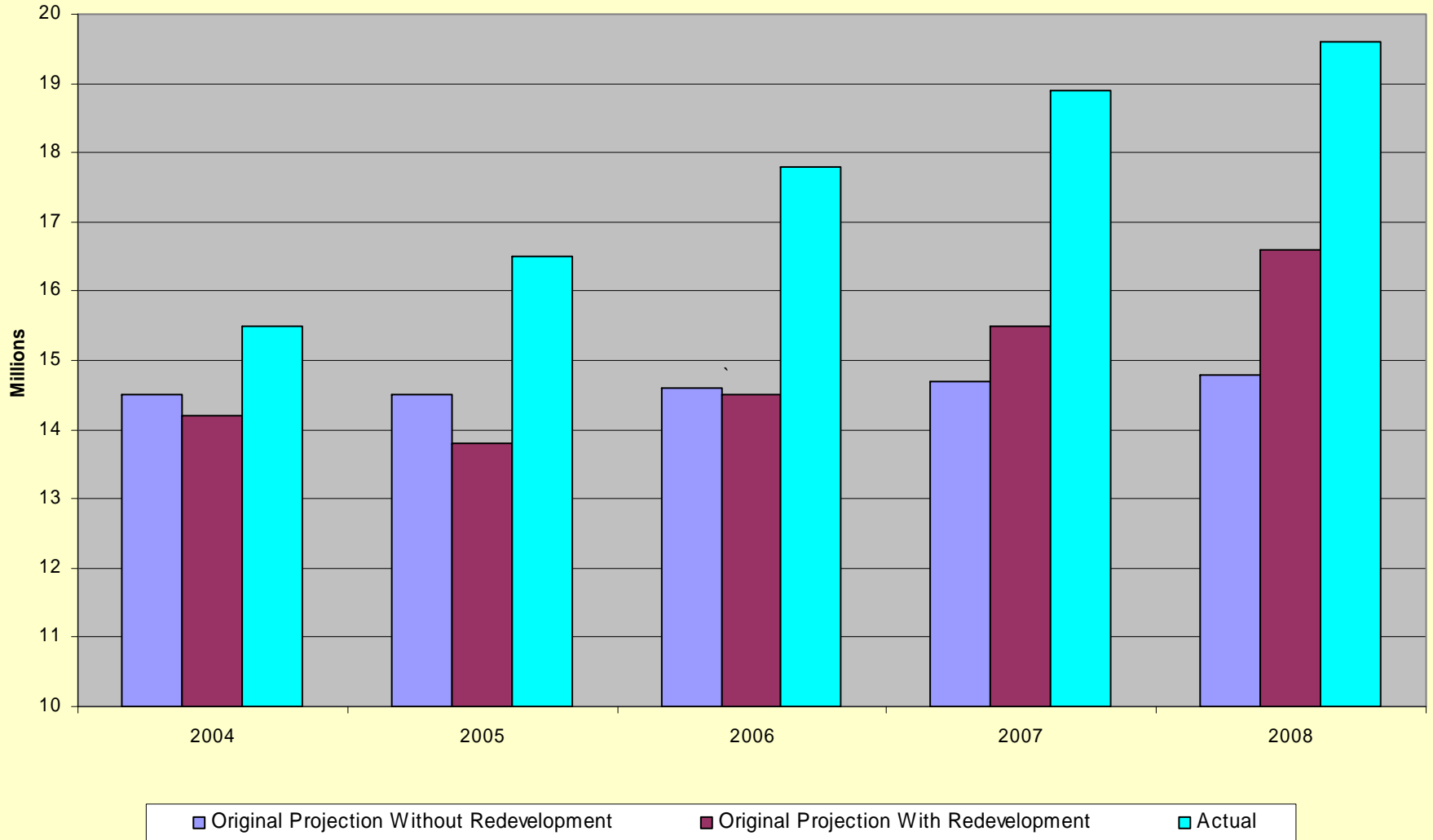
Steamboat Springs - 9%

**Vail - 6%**

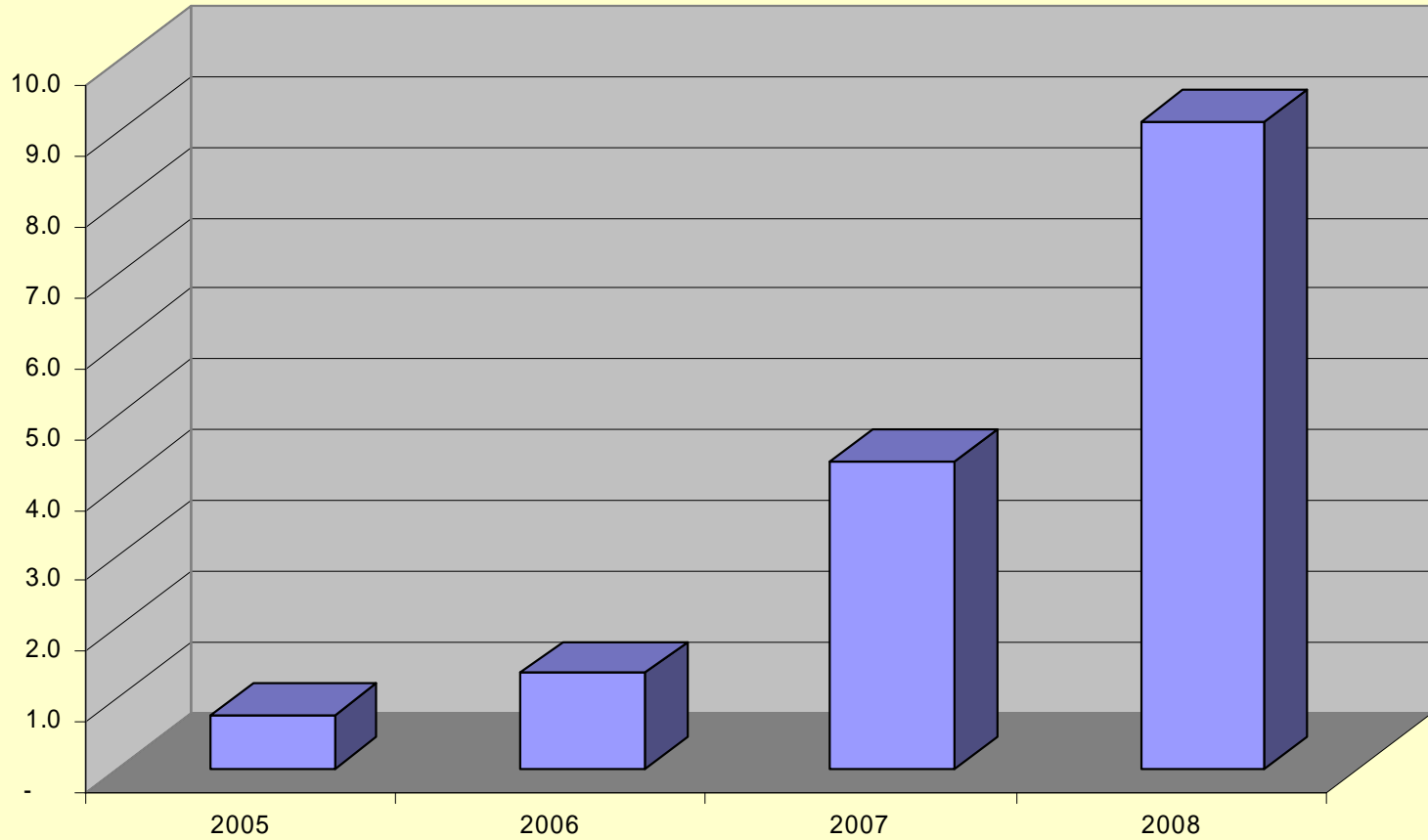
# ESTIMATED Impact of Redevelopment on TOV Sales Tax As of December 2004



# ACTUAL Impact of Redevelopment on TOV Sales Tax As of December 2008



## Net New Revenue Generated from Redeveloped Properties (Millions)



# Town of Vail Fund Reserves: \$43.9 million

